



# THE OBSERVATORY

CANTERBURY

A VERY SPECIAL DEVELOPMENT OF 3 & 4 BEDROOM HOMES



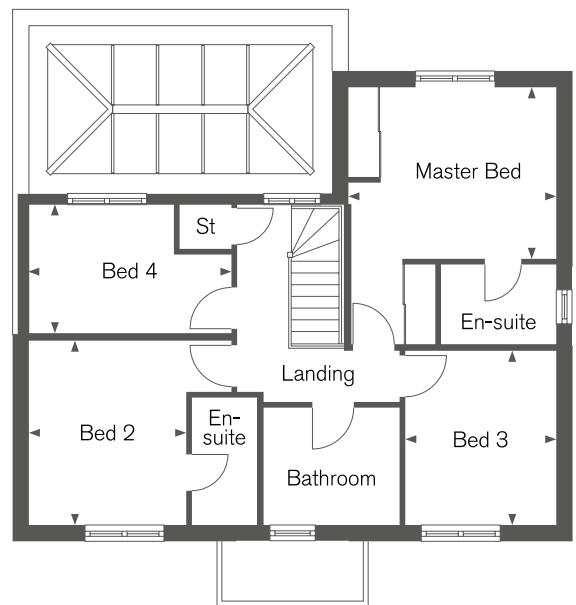
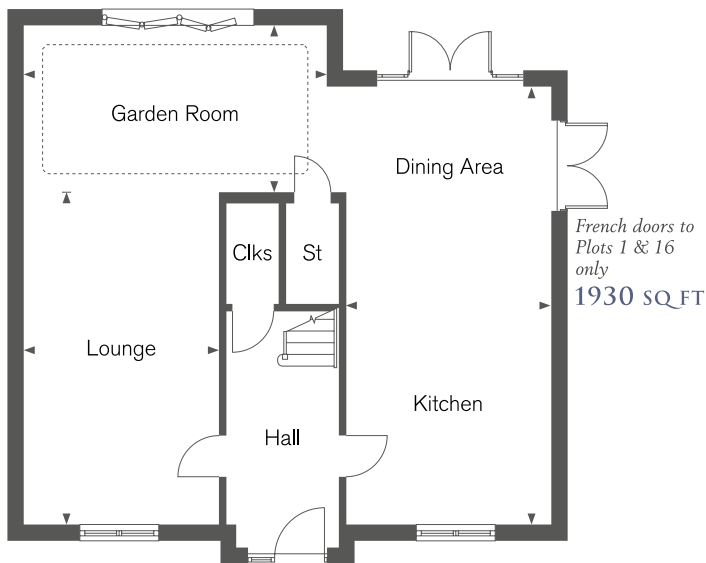
## THE SNOWDON FROM 1904 SQ FT 4 BEDROOM HOME

A 4 BEDROOM DETACHED HOME WITH EITHER SINGLE OR DOUBLE GARAGE,  
OPEN PLAN LOUNGE/GARDEN ROOM/DINING ROOM/KITCHEN AREA  
AND 2 EN-SUITES

# THE OBSERVATORY

## CANTERBURY

A VERY SPECIAL DEVELOPMENT OF 3 & 4 BEDROOM HOMES



### Ground Floor

#### Lounge

6.75m x 3.92m (22' 2" x 12' 10")

#### Kitchen/Dining Area

8.78m x 4.11m (28' 10" x 13' 6")

#### Garden Room

6.08m x 3.26m (20' 0" x 10' 8")

### First Floor

#### Master Bedroom

4.11m x 3.43m (13' 7" x 11' 3")

#### Bedroom 2

3.70m x 3.16m (12' 2" x 10' 4")

#### Bedroom 3

3.49m x 3.02m (11' 5" x 9' 11")

#### Bedroom 4

4.07m x 2.55m (13' 4" x 8' 5")

Computer Generated Images and floorplans show a typical Snowdon house type. Details may vary from plot to plot. Dimensions are approximate and should not be used for furniture space, appliance space or carpet sizes. Please ask for details of your chosen plot. The contents of this leaflet do not form or constitute a warranty or represent part of any contract.