



Pentland
Homes



The Quartz

3 BEDROOM HOUSE | SEMI-DETACHED

The Quartz

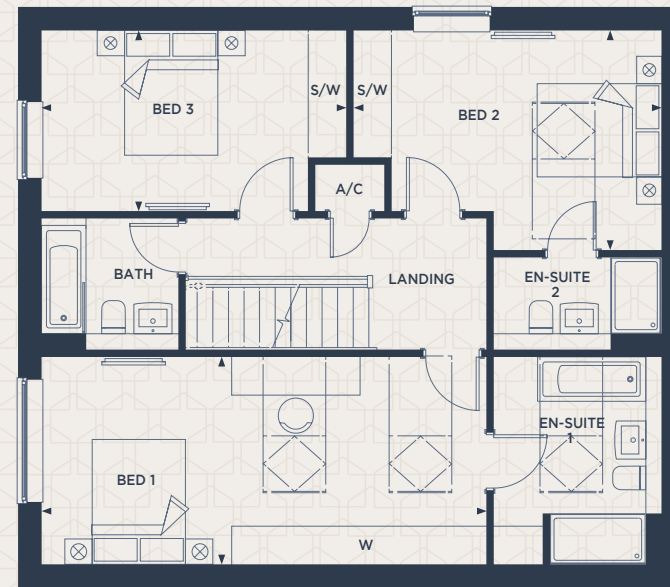
3 BEDROOM HOUSE | SEMI-DETACHED

1,530 SQ FT / 142 SQ M



GROUND FLOOR

KITCHEN	4.71m x 3.85m / 15'5" x 12'8"
DINING	2.47m x 3.85m / 8'1" x 12'8"
LIVING ROOM	3.72m x 4.53m / 12'2" x 14'10"



FIRST FLOOR

BEDROOM 1	6.97m x 3.25m / 22'10" x 10'8"
BEDROOM 2	4.82m x 3.44m / 15'10" x 11'3"
BEDROOM 3	4.78m x 2.83m / 15'8" x 9'3"

Customers should note this illustration is an example of The Quartz house type. All dimensions indicated are approximate and the furniture layout is for illustrative purposes only. Homes may be 'handed' (mirror image) versions of the illustrations, and may be detached, semi-detached or terraced. Materials used may differ from plot to plot including render and roof tile colours. Detailed plans and specifications are available for inspection for each plot at our Sales Centre during working hours and customers must check their individual specifications prior to making a reservation.