



Pentland
Homes



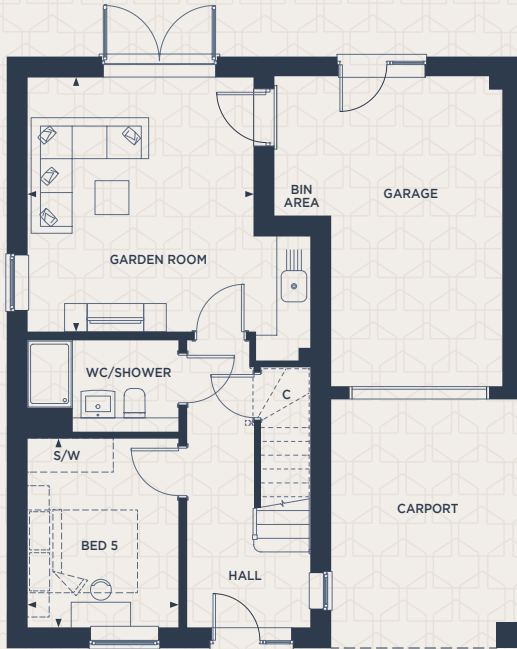
The Smoke

5 BEDROOM HOUSE | DETACHED

The Smoke

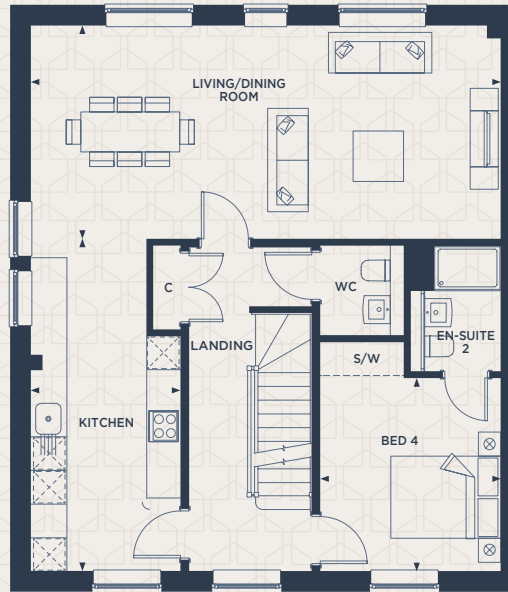
5 BEDROOM HOUSE | DETACHED

2,256 SQ FT / 210 SQ M



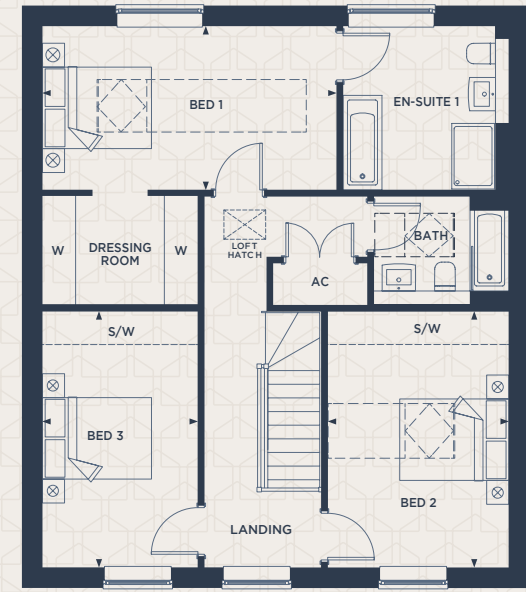
GROUND FLOOR

GARDEN ROOM	4.48m x 3.98m / 14'8" x 13'1"
BEDROOM 5	3.34m x 2.68m / 10'11" x 8'9"



FIRST FLOOR

LIVING/DINING	3.80m x 8.37m / 12'6" x 27'6"
KITCHEN	5.90m x 2.68m / 19'4" x 8'9"
BEDROOM 4	3.44m x 3.20m / 11'3" x 10'6"



SECOND FLOOR

BEDROOM 1	2.94m x 5.28m / 9'8" x 17'4"
BEDROOM 2	4.60m x 3.25m / 15'1" x 10'8"
BEDROOM 3	4.60m x 2.79m / 15'1" x 9'2"

Customers should note this illustration is an example of The Smoke house type. All dimensions indicated are approximate and the furniture layout is for illustrative purposes only. Homes may be 'handed' (mirror image) versions of the illustrations, and may be detached, semi-detached or terraced. Materials used may differ from plot to plot including render and roof tile colours. Detailed plans and specifications are available for inspection for each plot at our Sales Centre during working hours and customers must check their individual specifications prior to making a reservation.