



POPPYFIELDS  
HAWKINGE



THE LYDDEN

5 BEDROOM DETACHED HOUSE



Pentland  
Homes

# THE LYDDEN

5 BEDROOM DETACHED HOUSE

1570 SQ FT | 145.94 SQ M



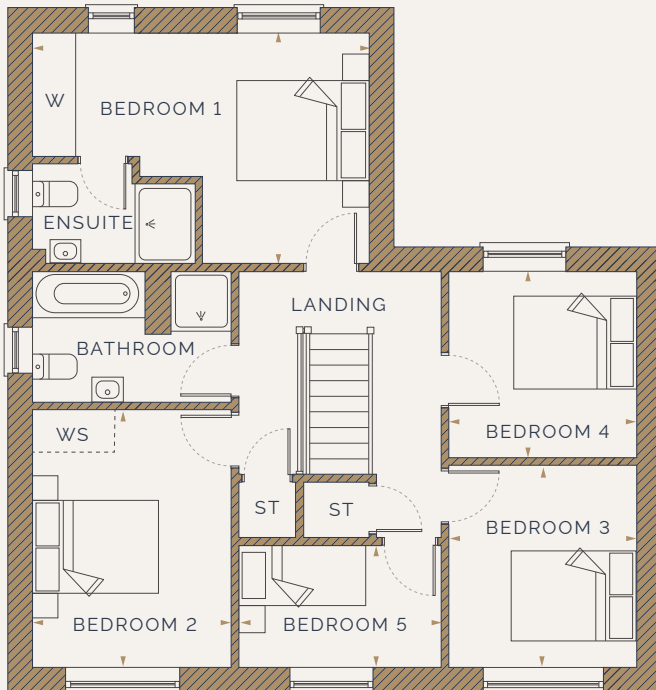
## GROUND FLOOR

KITCHEN/DINING AREA  
5.08m x 3.45m / 16'8" x 11'3"

FAMILY ROOM/STUDY  
2.85m x 3.99m / 9'4" x 13'1"

LIVING ROOM  
3.90m x 5.98m / 12'9" x 19'7"

UTILITY ROOM  
1.79m x 1.87m / 5'10" x 6'1"



## FIRST FLOOR

BEDROOM 1  
2.78m x 3.48m / 9'1" x 11'5"

BEDROOM 2  
3.00m x 3.89m / 9'10" x 12'9"

BEDROOM 3  
2.84m x 3.05m / 9'4" x 10'0"

BEDROOM 4  
2.84m x 2.81m / 9'4" x 9'2"

BEDROOM 5  
3.05m x 1.84m / 10'0" x 6'0"

TOTAL STORAGE  
35 SQ FT / 3.28 SQ M\*

KEY   ◀ DIMENSIONS   ST STORAGE   WS WARDROBE SPACE   W WARDROBE

\*Total storage includes pantry space and excludes built-in wardrobes and dressing areas.

Artist's impression, for illustrative purposes only. Facade and roof details may vary. Floorplans shown are for approximate measurements only. Exact layouts and sizes may vary. All measurements may vary within a tolerance of 5%. The dimensions are not intended to be used for carpet sizes, appliance sizes or items of furniture. Furniture layouts are indicative only. Kitchen layout indicative only. Please ask Sales Consultant for further information. Floorplans have been sized to fit the page, as a result this plan may not be at the same scale.

Discover the difference | [pentlandhomes.co.uk](http://pentlandhomes.co.uk)

