



## THE BARNs AT WYE

ASHFORD



## BIRCHWOOD HOUSE

4 BEDROOM SEMI-DETACHED HOUSE

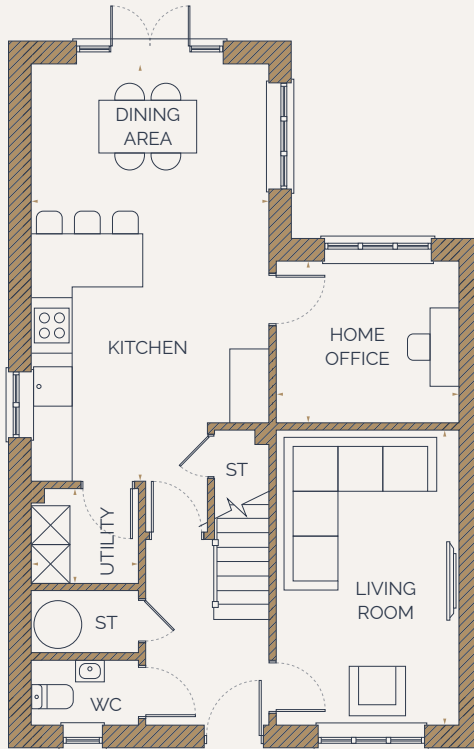


Pentland  
Homes

# BIRCHWOOD HOUSE

4 BEDROOM SEMI-DETACHED HOUSE

1385 SQ FT | 128.7 SQ M



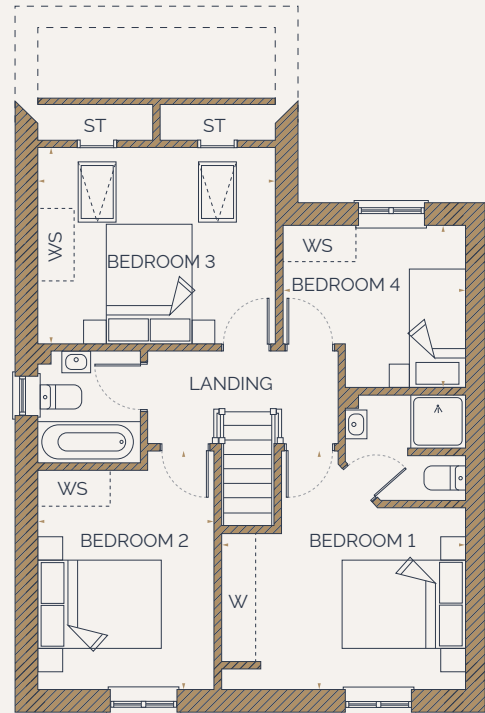
## GROUND FLOOR

KITCHEN / DINING AREA  
6.97m x 3.95m / 22'11" x 13'0"

LIVING ROOM  
4.93m x 3.03m / 16'2" x 9'11"

HOME OFFICE  
3.03m x 2.69m / 9'11" x 8'10"

UTILITY  
1.58m x 1.78m / 5'2" x 5'10"



## FIRST FLOOR

BEDROOM 1  
3.98m x 4.07m / 13'1" x 13'4"

BEDROOM 2  
3.98m x 2.94m / 13'1" x 9'8"

BEDROOM 3  
3.26m x 3.95m / 10'8" x 13'0"

BEDROOM 4  
2.70m x 3.03m / 8'10" x 9'11"

TOTAL STORAGE  
43 SQ FT / 4 SQ M\*

KEY    ◀ DIMENSIONS    ST STORAGE    WS WARDROBE SPACE    W WARDROBE

\*Total storage includes pantry space and excludes built-in wardrobes and dressing areas.

Artist's impression, for illustrative purposes only. Facade and roof details may vary. Floorplans shown are for approximate measurements only. Exact layouts and sizes may vary. All measurements may vary within a tolerance of 5%. The dimensions are not intended to be used for carpet sizes, appliance sizes or items of furniture. Furniture layouts are indicative only. Kitchen layout indicative only. Please ask Sales Consultant for further information. Floorplans have been sized to fit the page, as a result this plan may not be at the same scale.

Discover the difference | [pentlandhomes.co.uk](http://pentlandhomes.co.uk)

