



GROVEHURST GATE

SITTINGBOURNE



THE THROWLEY

3 BEDROOM SEMI-DETACHED HOUSE

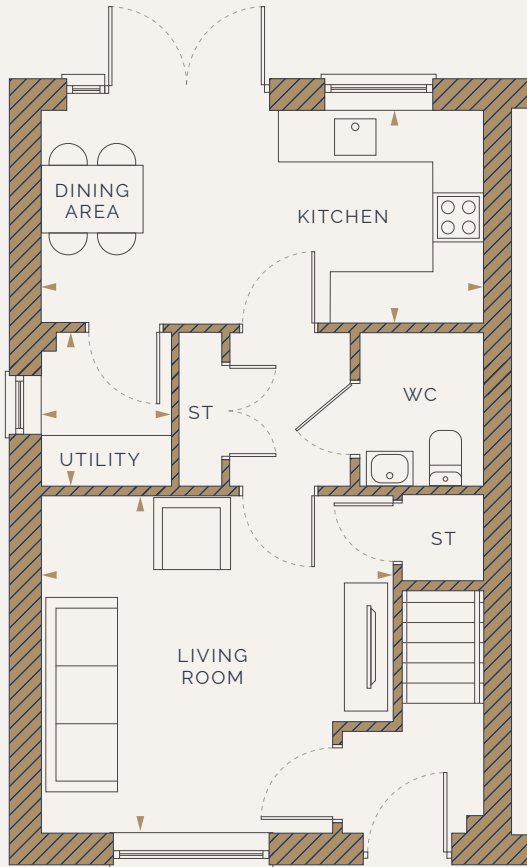


Pentland
Homes

THE THROWLEY

3 BEDROOM SEMI-DETACHED HOUSE

943 SQ FT | 88 SQ M

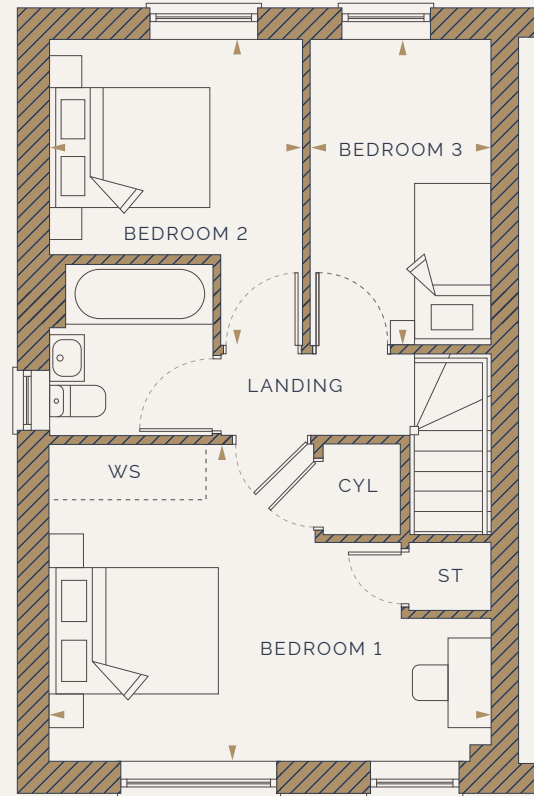


GROUND FLOOR

KITCHEN / DINING AREA
5.18m x 2.48m / 16'11" x 8'1"

LIVING ROOM
4.11m x 3.94m / 13'6" x 12'11"

UTILITY ROOM
1.49m x 1.79m / 4'10" x 5'10"



FIRST FLOOR

BEDROOM 1
5.18m x 3.71m / 17'0" x 12'2"

BEDROOM 2
2.95m x 3.57m / 9'8" x 11'8"

BEDROOM 3
2.11m x 3.57m / 6'11" x 11'8"

KEY ◀ DIMENSIONS CYL CYLINDER CUPBOARD ST STORAGE WS WARDROBE SPACE

The artist's impression is house type specific not plot type specific and are for illustrative purposes only. Whilst every effort has been made to ensure that the measurements and dimensions referred to on this insert are an accurate reflection of the dimensions and measurements of the plots when built, the dimensions may vary from the measurements shown within a tolerance of 5%. Furniture layouts are indicative only, therefore we strongly advise not to order any carpets, appliances or other goods which depend on precise dimensions before carrying out an actual measurement check within your reserved plot. Whilst every reasonable effort has been made to ensure that the information contained on this insert is correct, it is designed specifically as a guide only and does not constitute or form any part of a contract of sale transfer or lease unless at any point you specifically want to rely on these that it is confirmed in writing by Pentland Homes and is referred to in the contract. Please ask one of our Sales Consultants for further information. Floorplans have been sized to fit the page, as a result this plan may not be at the same scale.

Discover the difference | pentlandhomes.co.uk

